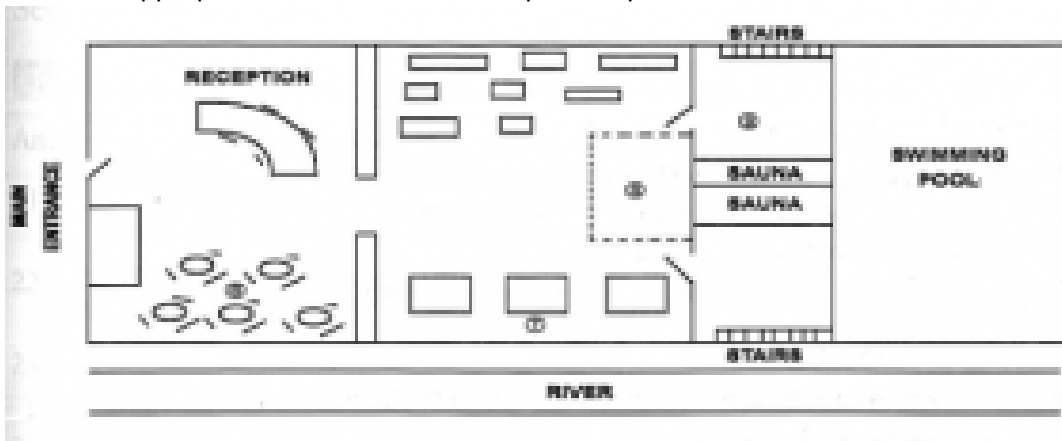


**SECTION 1. QUESTION 1-10. Q. 1-5.** Complete the following information using **NO MORE THAN THREE WORDS AND/OR NUMBERS** for each gap.

Surname	1 _____
Given name	Sharon
Address	2 _____, Tipton, TP3 4MB
Date of birth	3 _____
Type of membership	annual
Amount due	4 _____ £
Credit card number	4673 9702 0361
Expiry date	5 _____

**Q. 6-9.** Label the diagram of the gym, using **FOUR** of the following six labels. Write the appropriate letter in the correct space on your answer sheet.

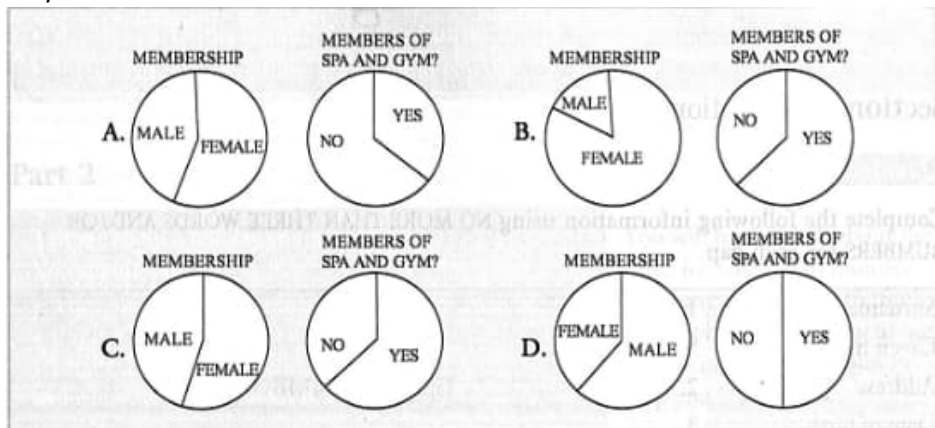


- A free weights area
- B ladies' changing area
- C men's changing area
- D refreshment area
- E treadmills
- F various machines

- 6 \_\_\_\_\_
- 7 \_\_\_\_\_
- 8 \_\_\_\_\_
- 9 \_\_\_\_\_

LIFESTYLE TRAINING CENTRE

**Q. 10.** Decide which pair of pie charts illustrate the membership of the gym and spa and write the appropriate letter on your answer sheet.



**SECTION 2. QUESTION 11-20**

**Q. 11 and 12.** Complete the following sentences using **NO MORE THAN TWO WORDS** for each gap.

**11** The university has produced a \_\_\_\_\_ to inform students about the different accommodation options available.

**12** All catered and self-catered accommodation is close to the \_\_\_\_\_

**Q. 13-16.** In boxes 13 -16 on your answer sheet, write

A if the statement applies to catered accommodation

B if the statement applies to self-catered accommodation

C if the statement applies to private accommodation

D if the statement is not mentioned at all by the accommodation officer

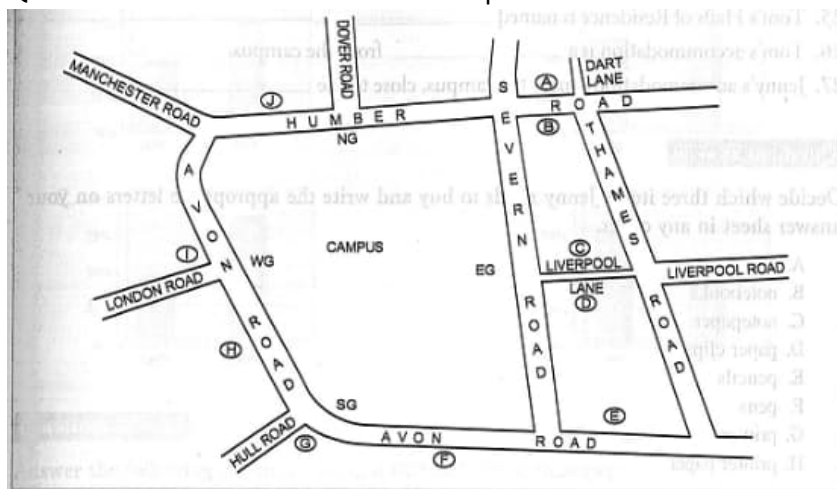
**13** Meals are included in the rent.

**14** This is the best accommodation for people who want to choose when they eat.

**15** Most students live in this kind of accommodation.

**16** This is the most expensive type of accommodation.

**Q. 17-20.** Decide which letter on the map shows the location of each of the following university halls of residence.



**17** Malvern Halls

**18** Grampian Halls

**19** Brecon Halls

**20** Sperrin Halls

LIFESTYLE<sup>®</sup>  
TRAINING CENTRE

**SECTION 3. QUESTION 21-30. Q. 21-24.** Answer the questions using **NO MORE THAN THREE WORDS** for each answer.

**21** When did Jenny arrive at the university? \_\_\_\_\_

**22** What is Tom going to study? \_\_\_\_\_

**23** What is Jenny going to study? \_\_\_\_\_

**24** What two items have the students been given? \_\_\_\_\_

**Q. 25-27.** Complete the following sentences using **NO MORE THAN TWO WORDS AND/OR NUMBERS** for each gap.

**25** Tom's Halls of Residence is named \_\_\_\_\_

**26** Tom's accommodation is a \_\_\_\_\_ from the campus.

**27** Jenny's accommodation is near the campus, close to the \_\_\_\_\_

**Q. 28-30.** Decide which three items Jenny needs to buy and write the appropriate letters on your answer sheet in any order.

A binders

B notebooks

C notepaper

D paperclips

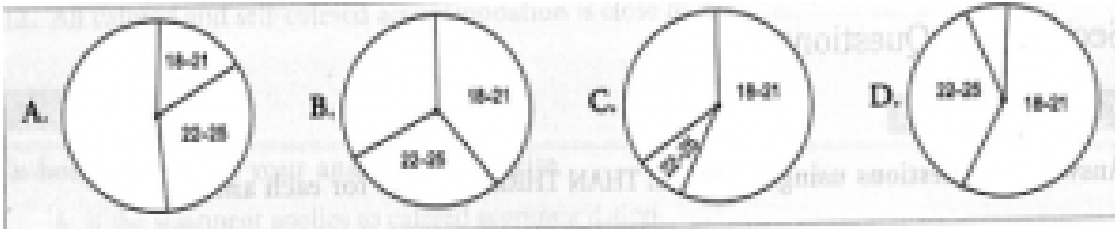
E pencils

F pens

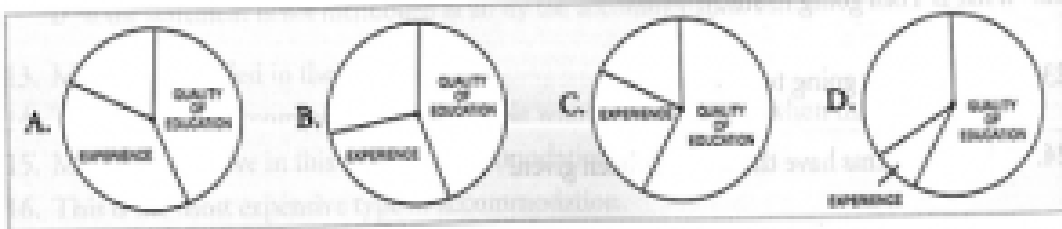
G primer

H printer paper

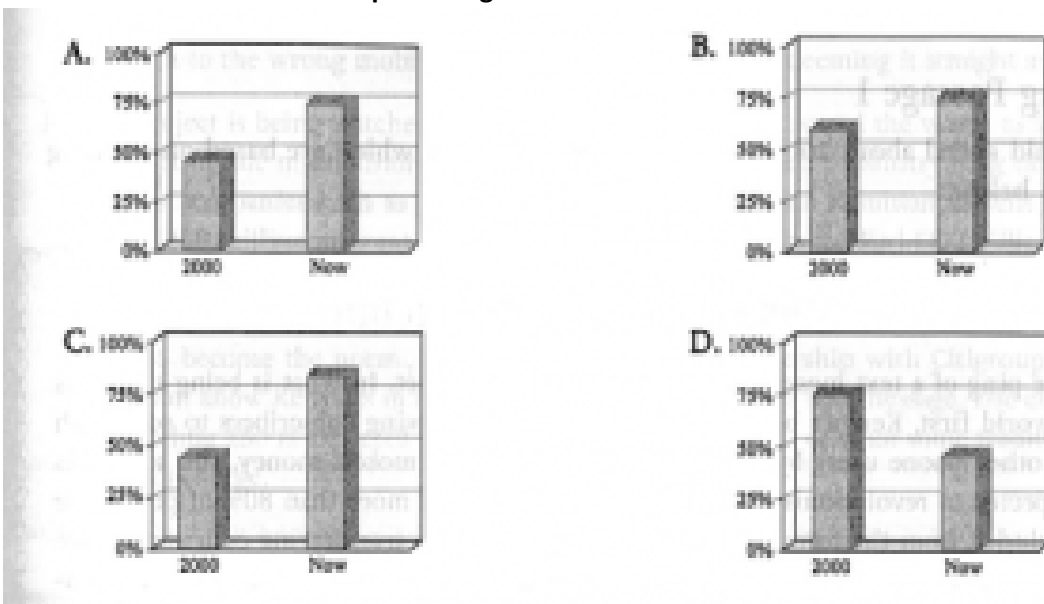
**SECTION 4. QUESTION 31-40. Q. 31-33. 31 Which pie chart shows the ages of the Asian students surveyed?**



**32 Which pie chart shows the main reasons Asian students wanted to study abroad?**



**33 Which bar chart shows the percentage of Asian students who made Australia their first choice destination?**



**Q. 34 and 35.** Answer the following questions using **A NUMBER** for each answer.

**34** Approximately how many foreign students enrolled in Australia in the year 2000?

**35** How much did Australia's education exports rise by last year?

**Q. 36-40.** Complete the following sentences using **NO MORE THAN TWO WORDS OR NUMBERS** for each gap.

**36** It became harder to get a \_\_\_\_\_ for the USA after September 11.

**37** \_\_\_\_\_ of Asian students gave lower study fees as a reason for choosing Australia.

**38** Asian students rank Australia number \_\_\_\_\_ in terms of educational quality.

**39** \_\_\_\_\_ programmes are unlikely to reduce the number of students going abroad in the near future.

**40** Asian students are increasingly using \_\_\_\_\_ to help arrange their studies abroad.